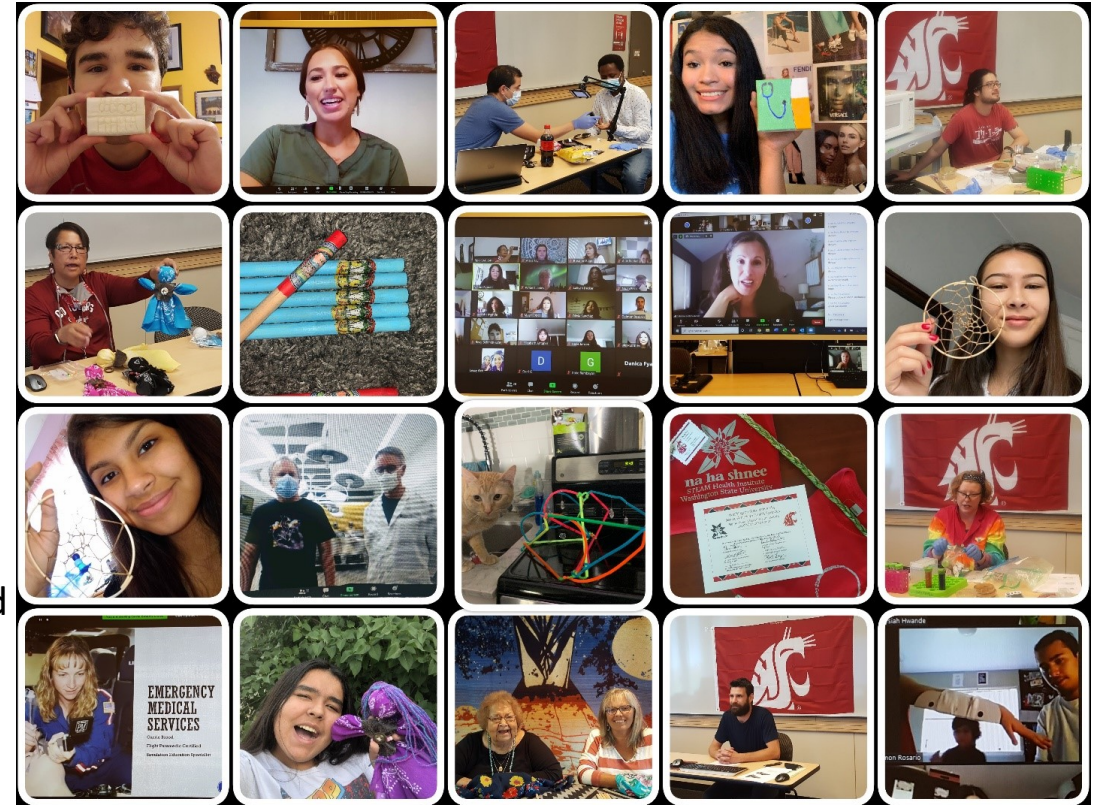


# Native American Health Sciences

Evanlene Melting Tallow  
Outreach Coordinator  
[e.meltingtallow@wsu.edu](mailto:e.meltingtallow@wsu.edu)

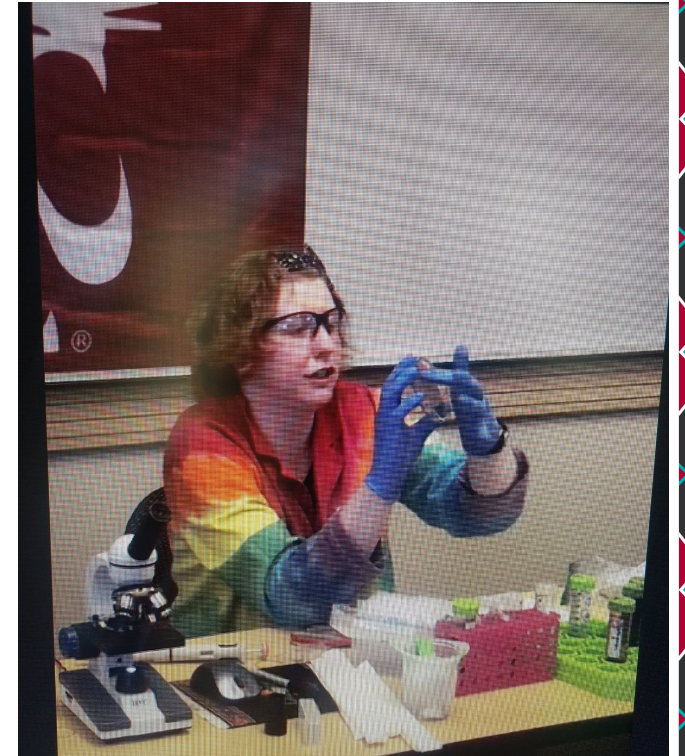
# Na-ha-shnee STEAM Health Institute

- July 6<sup>th</sup>-24<sup>th</sup>, 2020 (3 weeks virtually)
- 32 high school applicant's grades 9<sup>th</sup>-12<sup>th</sup>, 26 completed
- 22 different tribes in WA, ID, OR, MT, CA, NM
- 9 Native American students are from WSU MOU tribes (Cowlitz, Yakama, Confederated Salish & Kootenai, Coeur d'Alene, Quinault, Spokane, & Confederated Tribes of Warm Springs)
- 7 returning Na-ha-shnee students
- 23 students received 0.5 Health education high school credit
- 26 students received Chromebooks, microscopes, science kits, blood pressure cuffs, stethoscopes, cultural kits, art kits
- Next year's dates: June 28<sup>th</sup>-July 30<sup>th</sup> 2021 (5 weeks)



# Outcomes of Na-ha-shnee STEAM Health Institute

- Students took a pre survey and post survey
- This survey portrayed that more students can now see themselves in the healthcare field
  - Increased confidence
- They now have a better understanding of the college application process
- Students had an increased confidence that they could attend and graduate college
- Inspired the students to learn more about their culture
- Students can now confidently use a microscope, stethoscope, BP cuff, and other scientific instruments
- Students are more comfortable with research databases
- Students had the opportunity to use equipment that they never had before
  - Example: Micropipette
  - CAD- software that creates designs for the 3D printer





# Summer Programs in 2021

## Na'ha'shnee & STEAM

- 5 weeks virtually from June 28<sup>th</sup>-July 30<sup>th</sup>, 2021
- 8am-12pm M-F
- up to 35 NA participants who have completed 9<sup>th</sup>-12<sup>th</sup> grades
- **Application deadline April 16, 2021**

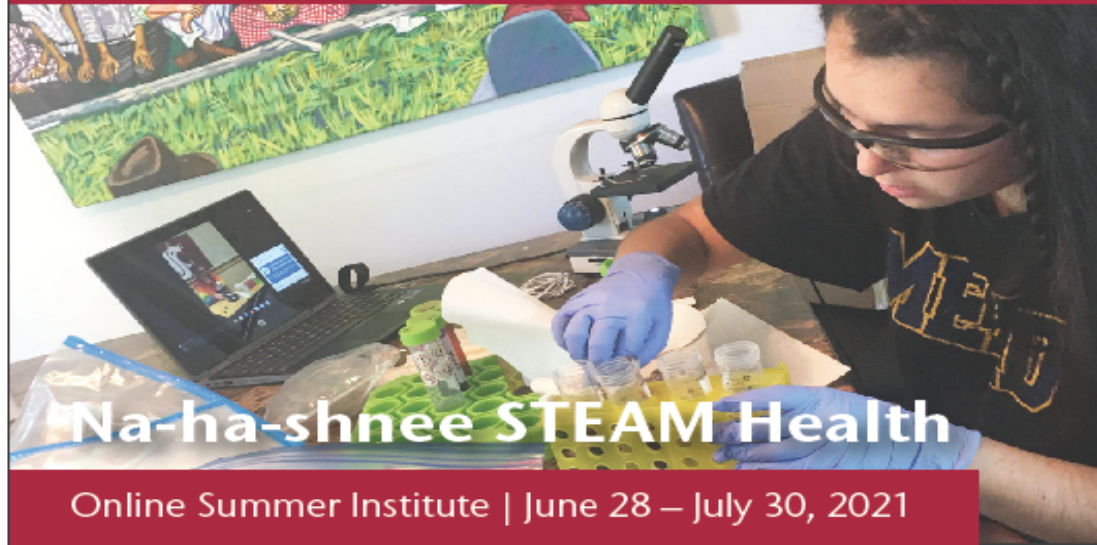
Participants will receive Chromebooks, microscopes, science kits, medical instruments, cultural kits, art kits, \$200 stipend when they complete the institute

**Applications and recruitment video are online now!:**

<https://spokane.wsu.edu/about/na-ha-shnee-steam-summer-institute/>







# Na-ha-shnee STEAM Health

Online Summer Institute | June 28 – July 30, 2021

Native American Health Sciences will be hosting the Na-ha-shnee STEAM Health Institute this June 28 – July 30, 2021. This program is designed for students interested in the health sciences and/or Science, Technology, Engineering, Art, and Math (STEAM Health) fields and have completed grades 9-12 at the end of this school year. This Institute will focus on health sciences and STEAM Health careers available, as well as research and learning opportunities within these fields. We will be providing hands-on learning experiences

4-hours each weekday through a Chromebook Laptop. We will send participants Chromebook, along with experiment kits, materials, and other supplies such as culturally based art projects to do in your home. You will learn from faculty and professionals across several health occupations, and receive cultural instruction from tribal elders. All expenses are paid for and students who participate for the full five weeks will be able to keep their Chromebook and receive a \$200 stipend!

For more information please visit

[spokane.wsu.edu/about/na-ha-shnee-steam-health-summer-institute-application](https://spokane.wsu.edu/about/na-ha-shnee-steam-health-summer-institute-application)

or contact the Native American Outreach Health Sciences Coordinator

Evanlene Melting Tallow at [e.meltingtallow@wsu.edu](mailto:e.meltingtallow@wsu.edu) and 509-358-7833

WASHINGTON STATE UNIVERSITY  HEALTH SCIENCES  
SPOKANE



# Summer Programs in 2021

## RISE Summer Academy through WSU ESFCOM & NAHS (in partnership with OHSU & UC-Davis)

- 6 weeks and run June 28<sup>th</sup> – August 6<sup>th</sup>, 2021
- up to 28 AIAN pre-med students
- Eligibility: identify as AIAN, have a non-competitive MCAT score OR plan to take the MCAT within 1 year of Summer Academy's end date
- Cost to attend is FREE, program held virtually and includes a full Kaplan instructed course with materials and free practices tests, biomedical courses, cultural tenet, virtual clinical shadowing & mentoring
- Upon completion, program will pay the cost of 1 MCAT examination (\$350)
- Applications due by March 10, 2021 go to: <https://medicine.wsu.edu/about-the-college/diversity-inclusion/pathway-programs/inmed-reimagine-indians-into-medicine-rise-pathway-program/>
- Participants will receive Kaplan instruction, MCAT practice tests, biomedical science supplemental instruction, cultural tenets, mentoring (part of a 5-yr \$1M federal grant award with WSU ESFCOM, NAHS, OHSU, UC-Davis)





# Center for Native American Health Science Health Education & Research Building (HERB) STE 202



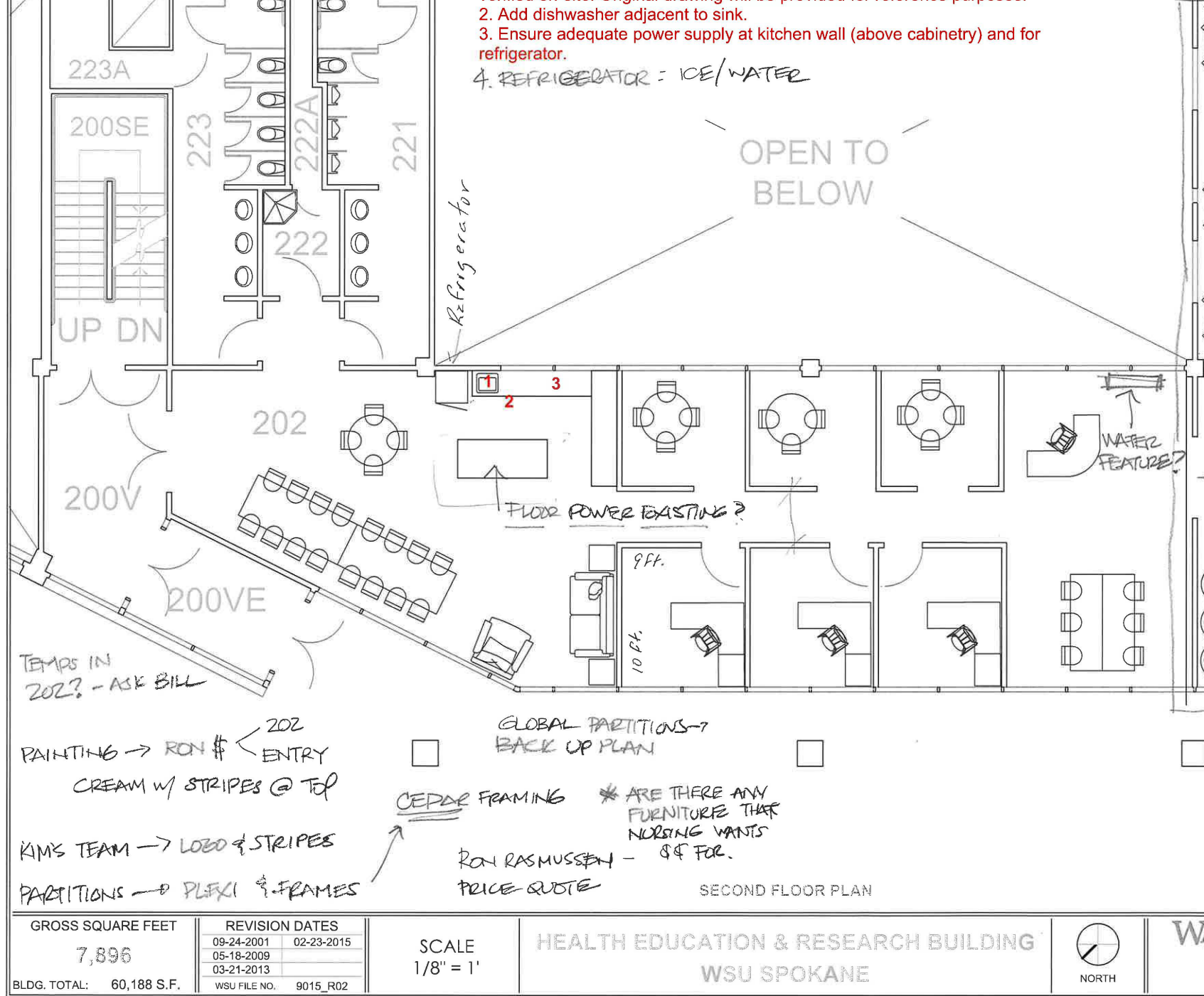


# Center for Native American Health

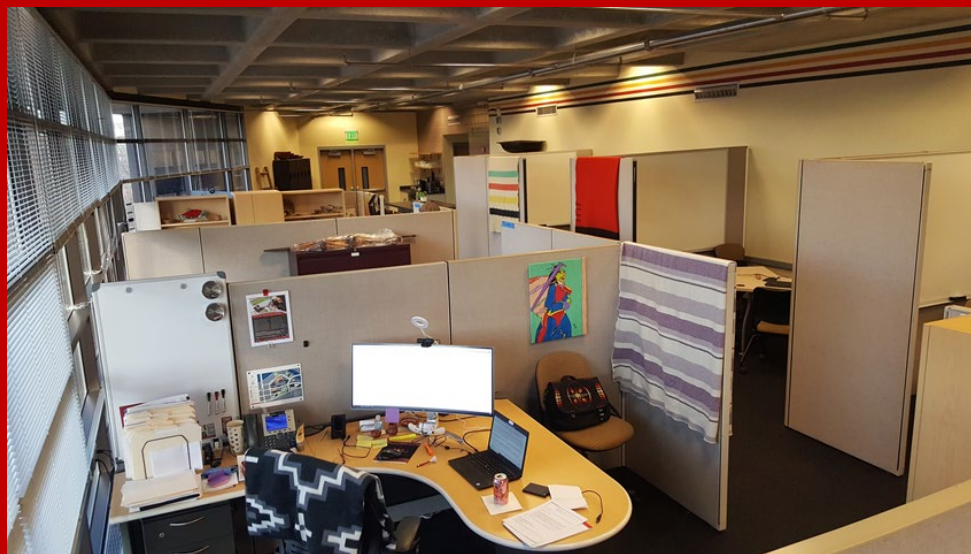
## Center will include:

- \* 3 smart rooms
- \* 6 cubicle PC lab with printer
- \* 4 staff/faculty office spaces
- \* kitchen & cultural gathering space
- \* 6 additional study tables/spaces
- \* lockers for student storage
- \* restrooms with showers
- \* digital support correspondence
- \* outdoor healing gardens & space
- \* culturally-based clinical patient practice exam room
- \* storage

FILE: C:\Users\mrauro\OneDrive - Washington State University (mrauro)\Documents\Drawings\9015\_R02.dwg  
PLOT DATE: February 24, 15 - 11:50 AM ORIGINAL PAPER SIZE: 11" x 17"



# WSU Spokane-Center for Native American Health





# 3 Smart Rooms & Conference table with Smart TV and Owl





# Gathering Space, Kitchen and Student Lockers





## College of Nursing

Jared Cramer  
Academic Coordinator &  
Advisor  
[jared.k.cramer@wsu.edu](mailto:jared.k.cramer@wsu.edu)

Undergraduate Programs  
Bachelor of Science in Nursing  
Degree (BSN)  
Direct-transfer Community  
College Program (RN-BSN)

## Pharmacy and Pharmaceutical Sciences

Evan Barton  
[evan.barton@wsu.edu](mailto:evan.barton@wsu.edu)

Doctor Of Pharmacy (PharmD) The Save-a Seat  
Program is for high school seniors and Current  
College students

## Elson S. Floyd College of Medicine

### Speech and Hearing Sciences

Kelsey Meyer  
Academic Coordinator,  
Undergraduate Advisor  
[k.meyer@wsu.edu](mailto:k.meyer@wsu.edu)

Lynn Howard  
Director of Medical Student Recruitment  
[lynn.howard@wsu.edu](mailto:lynn.howard@wsu.edu)

Maura Schaefer  
Recruitment and Program Coordinator  
[maura.schaefer@wsu.edu](mailto:maura.schaefer@wsu.edu)

### Nutrition and Exercise Physiology

Jill Wagner  
Academic Coordinator  
[nep@wsu.edu](mailto:nep@wsu.edu)





# Questions?

